

A decorative graphic consisting of a thin yellow circle on the left side, partially overlapping a horizontal bar. The bar has a light green-to-white gradient and contains the main title. The title is enclosed in large, stylized brackets: a black left bracket and a yellow right bracket.

Using Data to Assess and Improve Racial Disproportionality

Charting and Analysis in SSIS

Nan Beman

Christeen Borsheim

May 2007

Using Data to Assess and Improve Racial Disproportionality

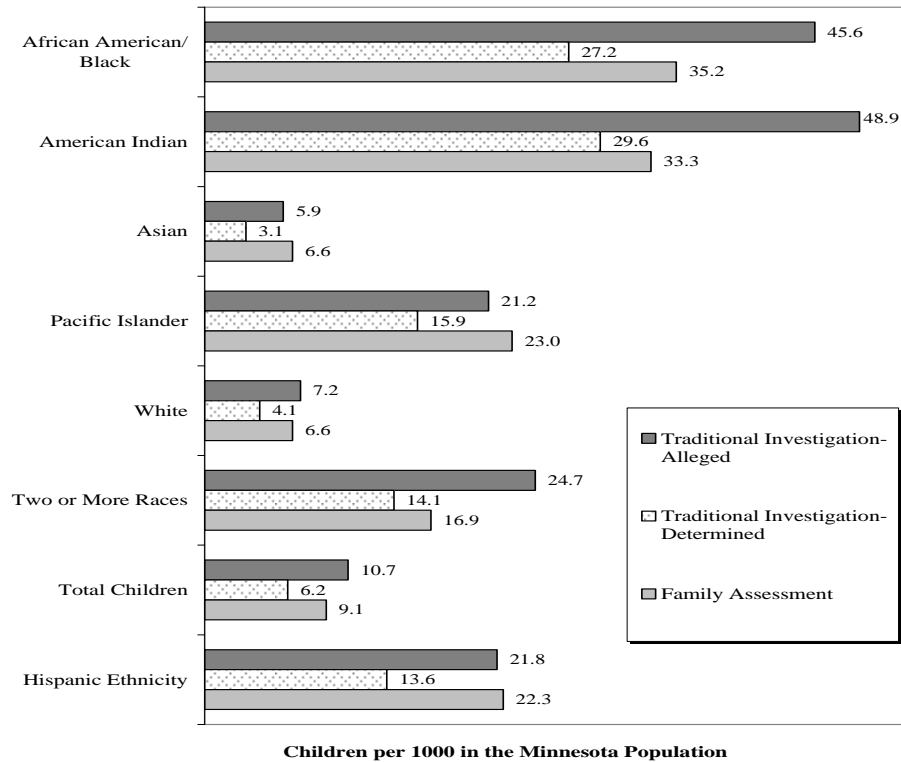
- Frame the issue of disproportionality at the national and state level
- Present SSIS Charting and Analysis as a tool to review and assess county performance
- Offer approaches for improving racial disproportionality

[Race Matters]

- Defining disproportionality
- Theories of disproportionality
- A national issue
- A state issue

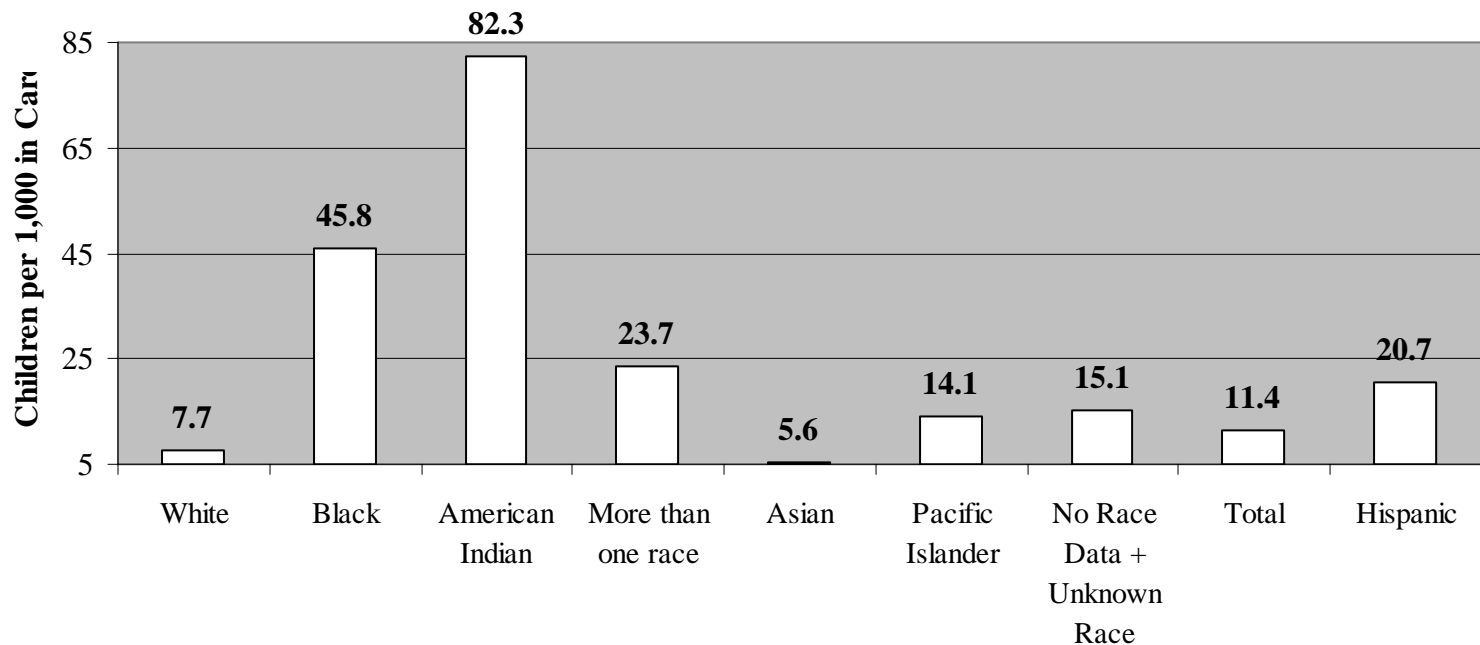
Data Matters: Disproportionality and Safety

Figure 9: Child Subjects of Maltreatment Reports by Race and Assessment Type
Rate per Thousand in the 2000 Minnesota Child Population



Data Matters: Disproportionality and Permanency

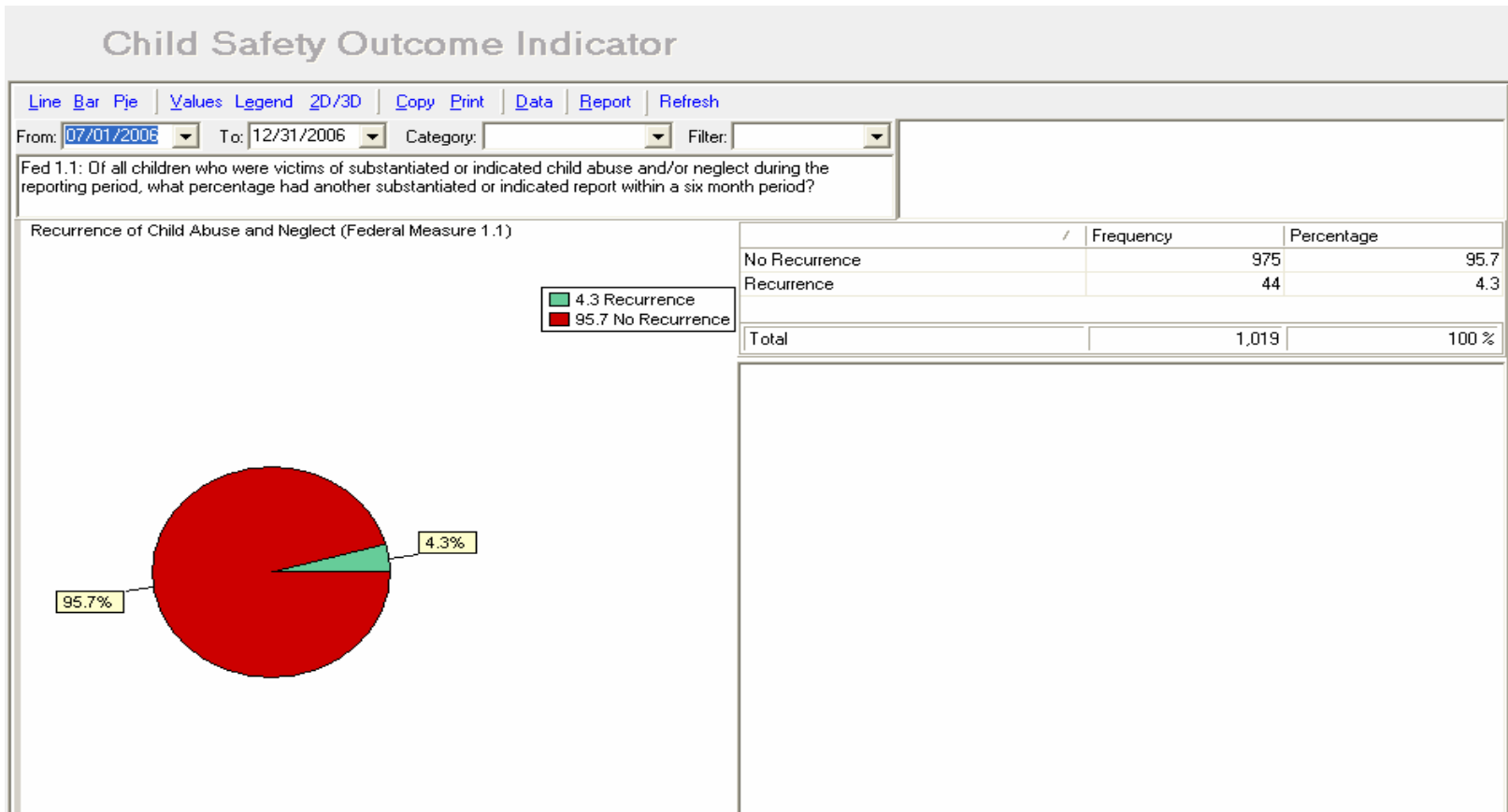
Children in Out-of-Home Care by Race
Rate per 1,000 in the MN Child Population



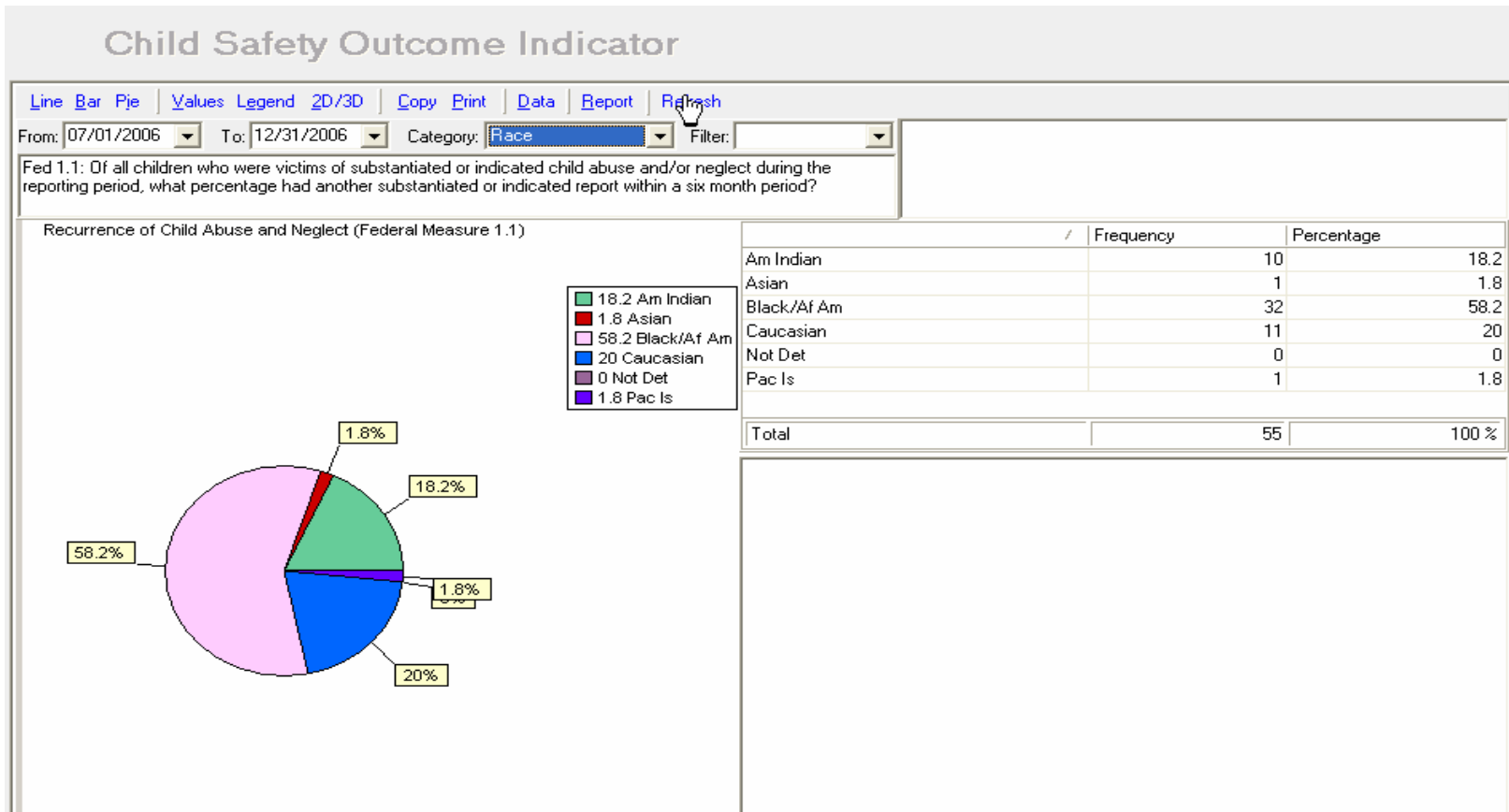
[A look at some county charts]

- The charts in this presentation are recent and from several counties around the state.
- Charting and Analysis pulls data from the active county database, so numbers change even on dates past due to changes entered into SSIS regarding older information.

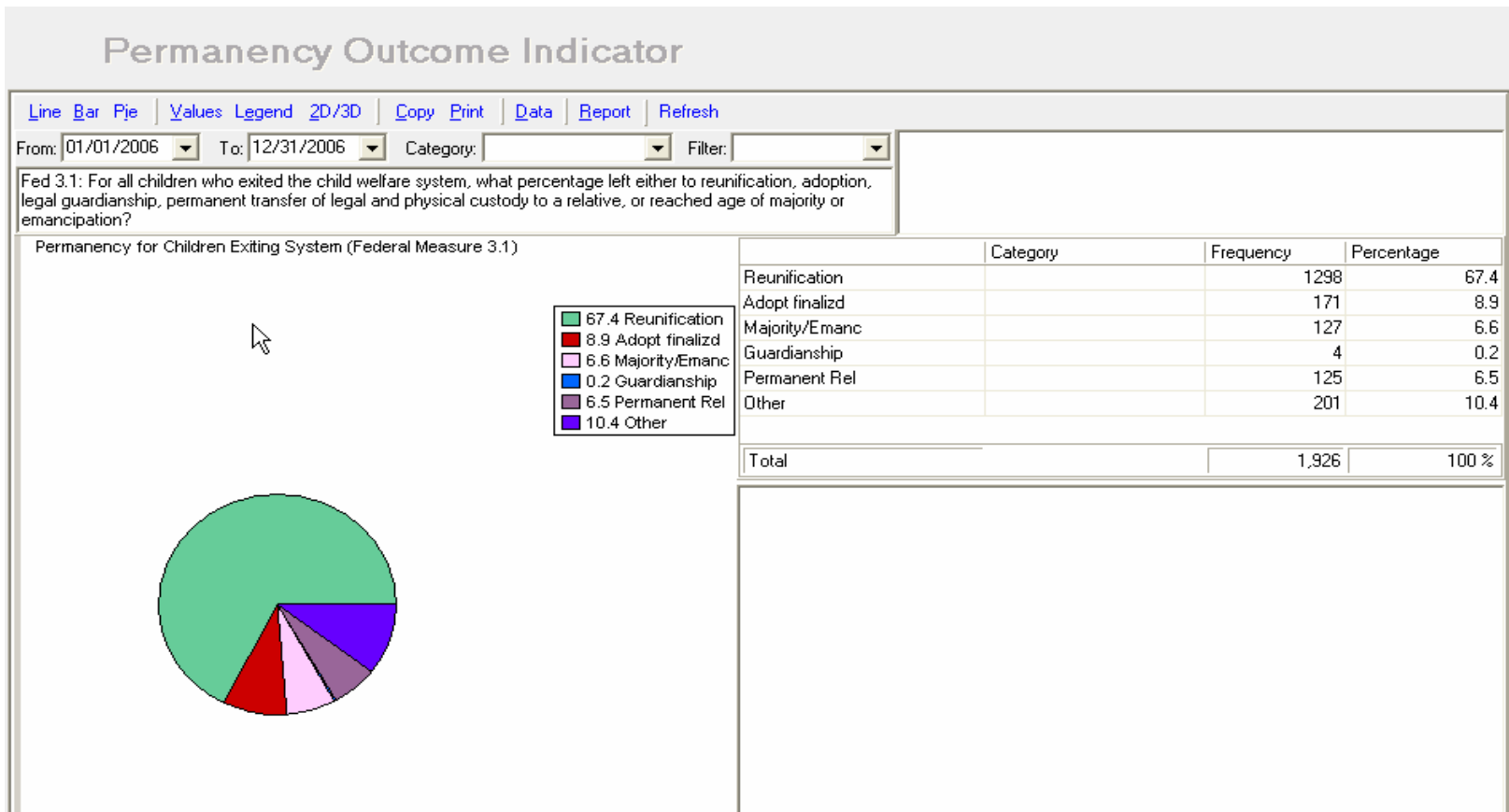
Recurrence default chart



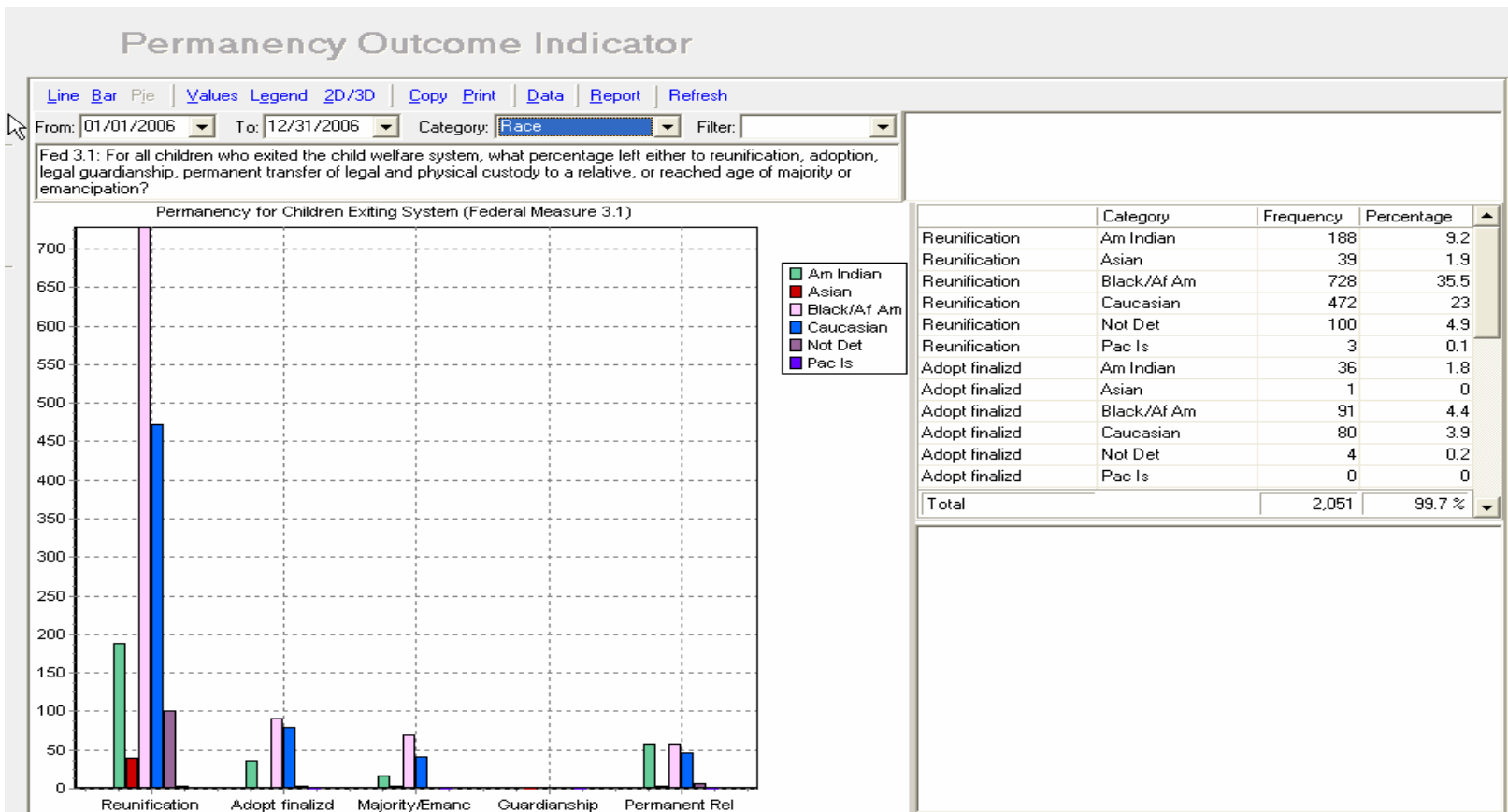
Recurrence filtered by race



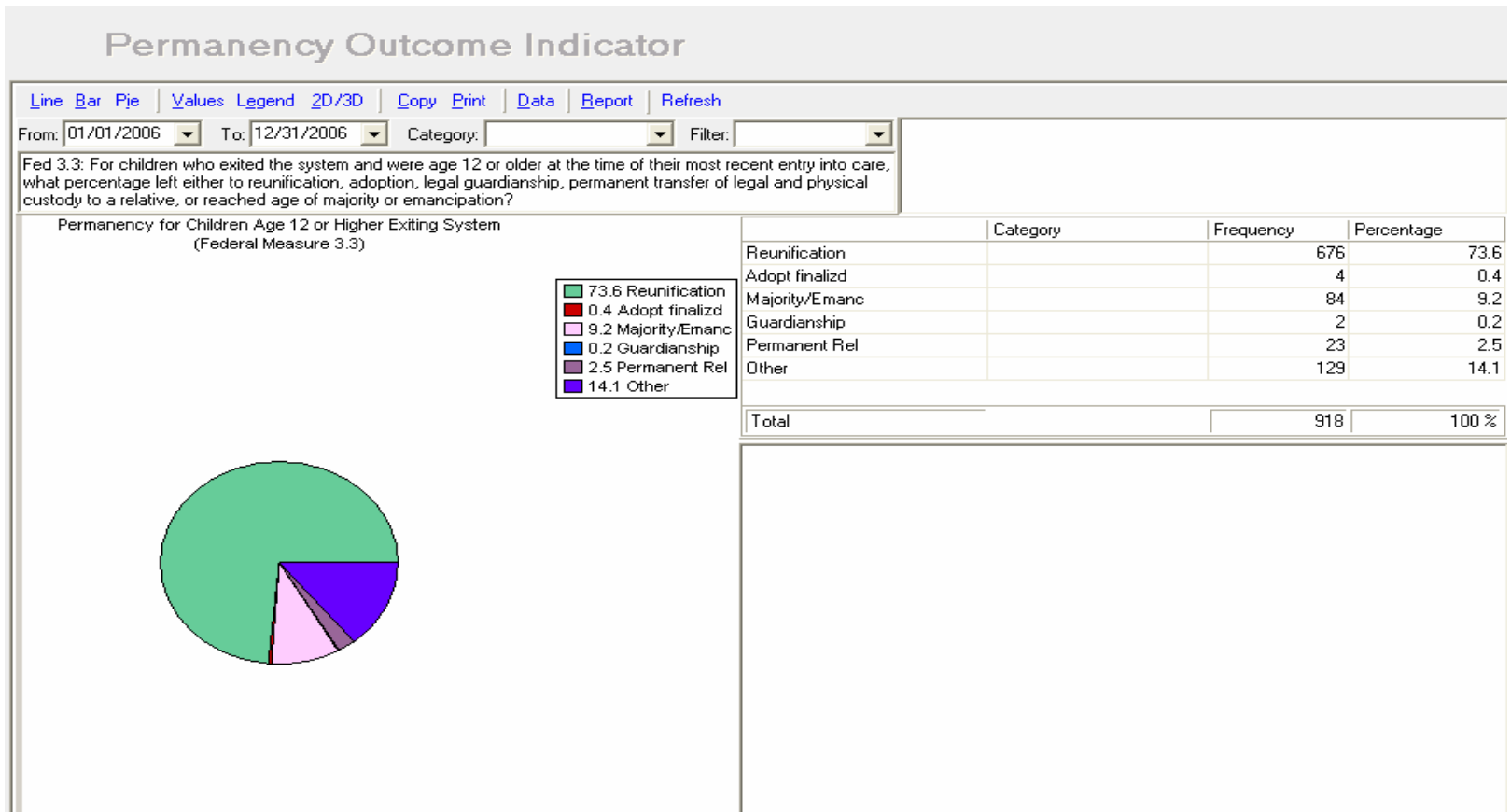
2006 permanency outcomes default chart



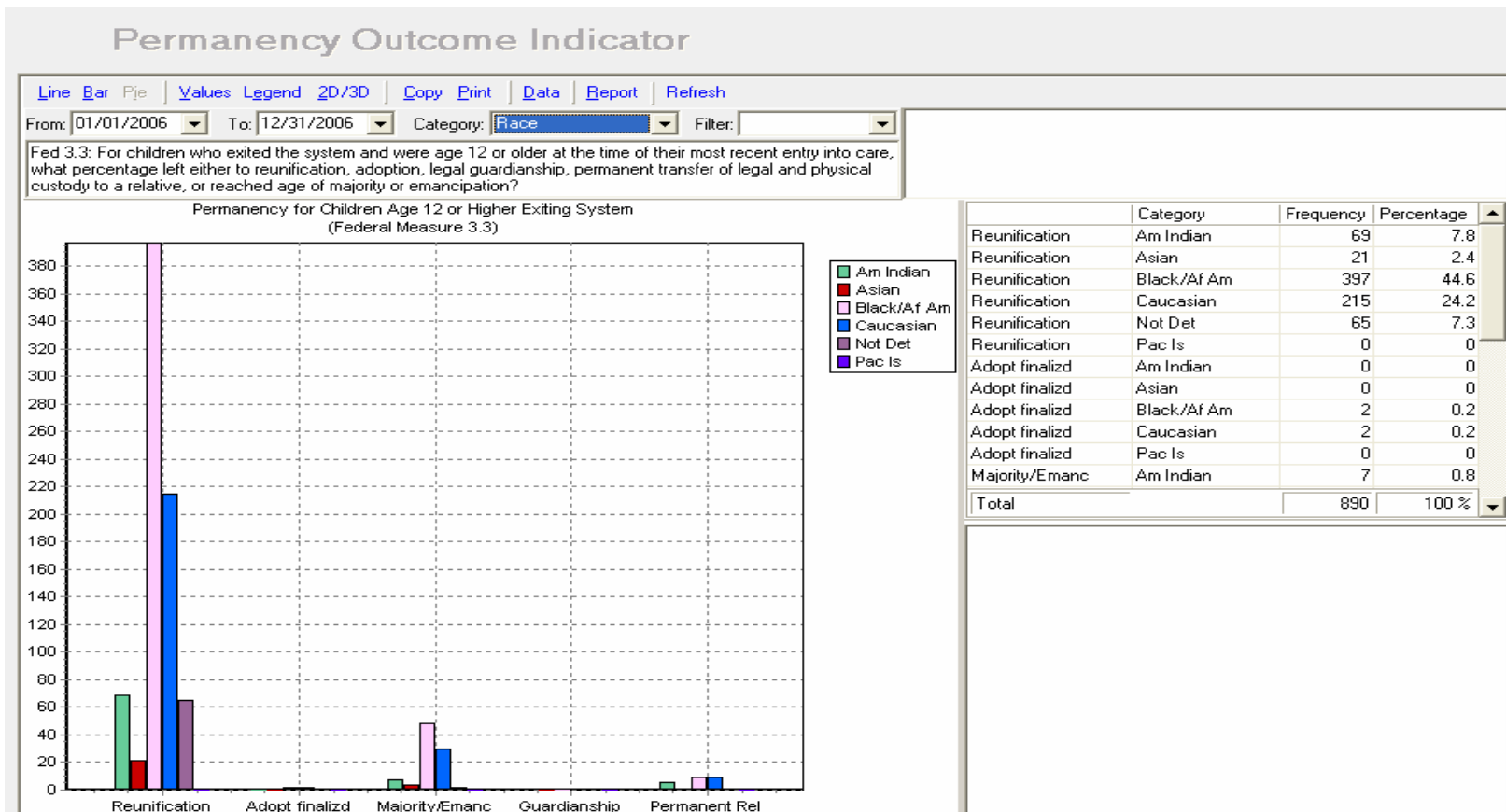
Permanency outcomes filtered by race for 2006



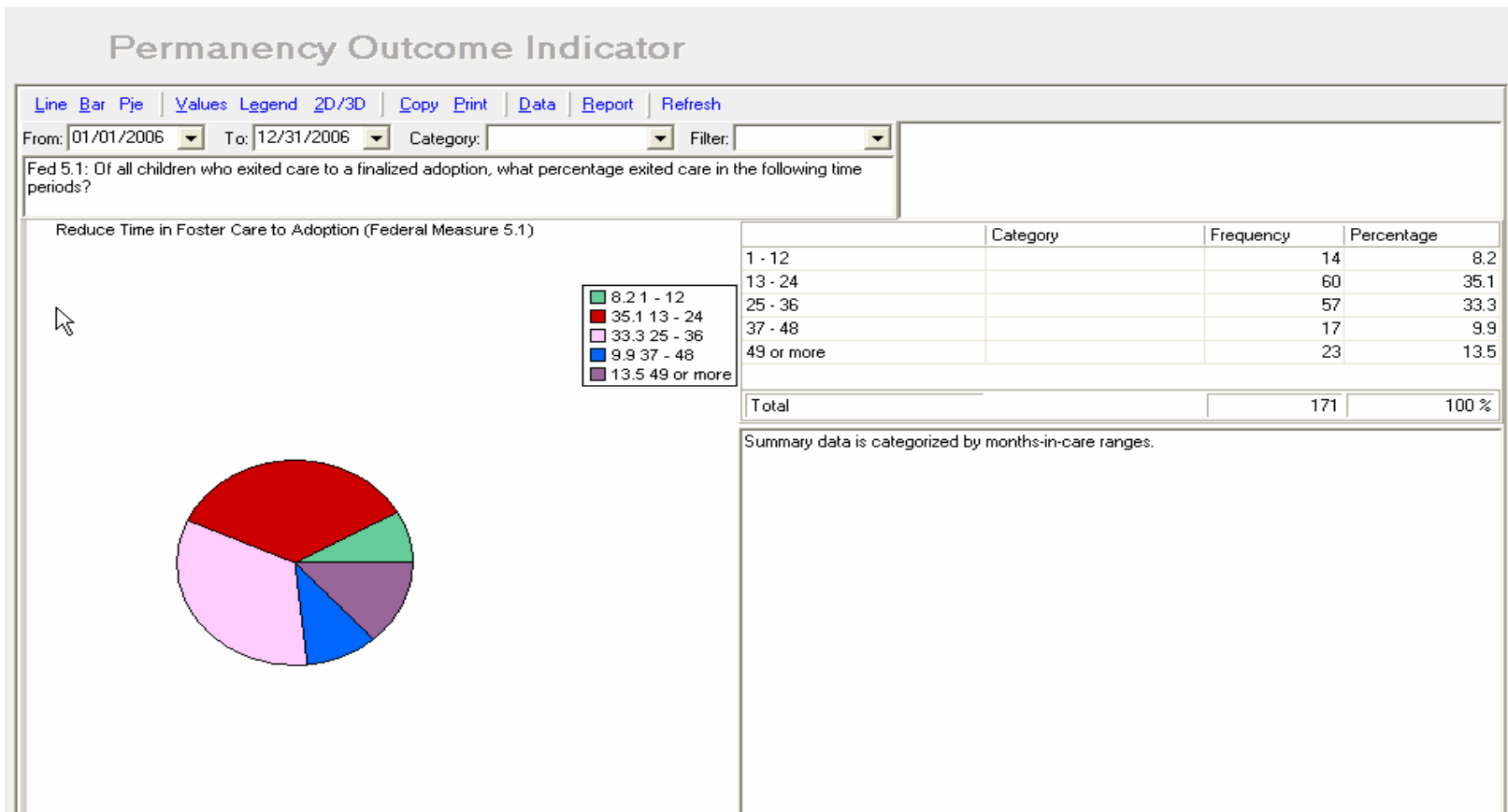
2006 outcomes for older children



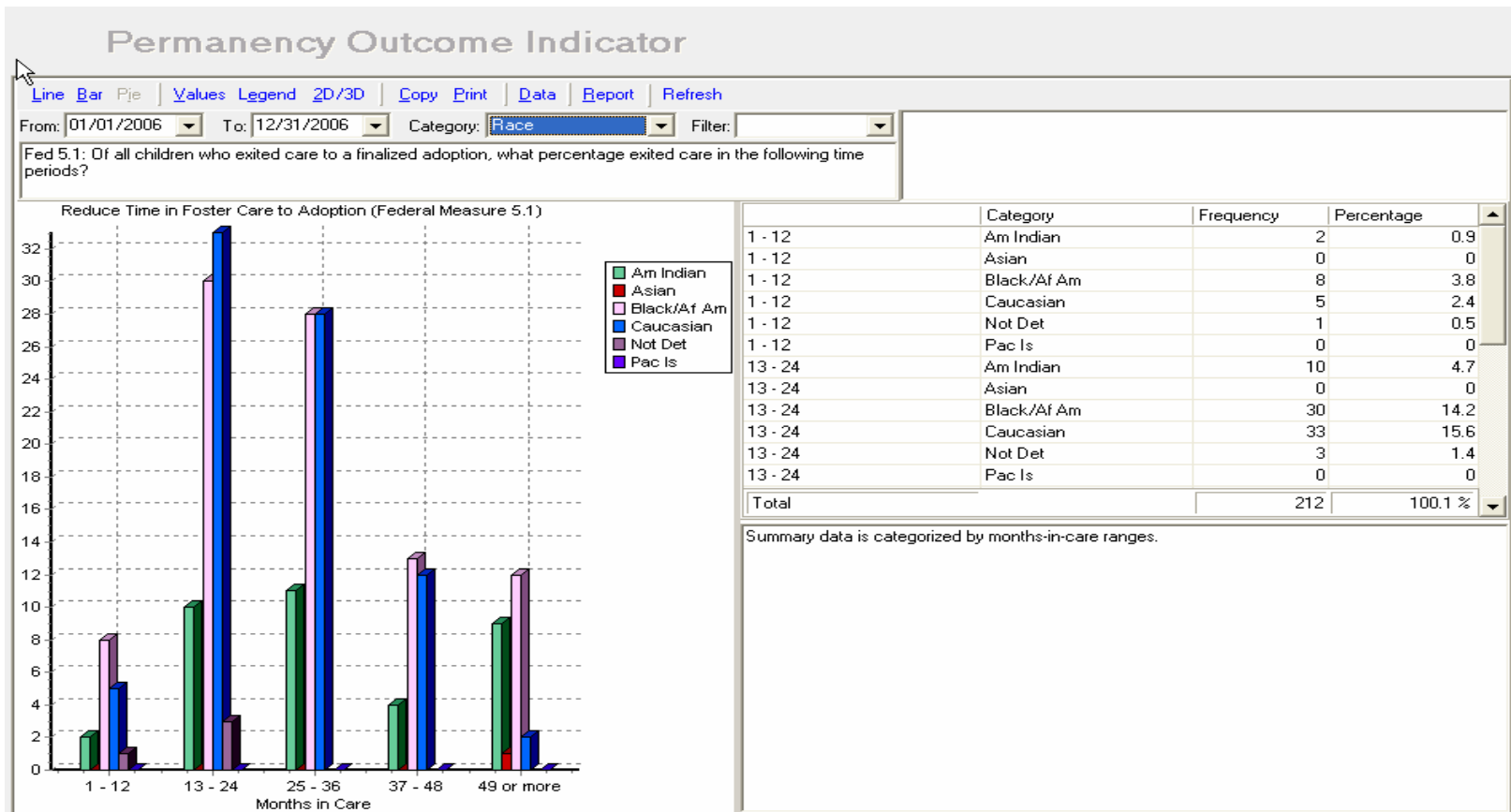
Permanency Outcomes for older children by race



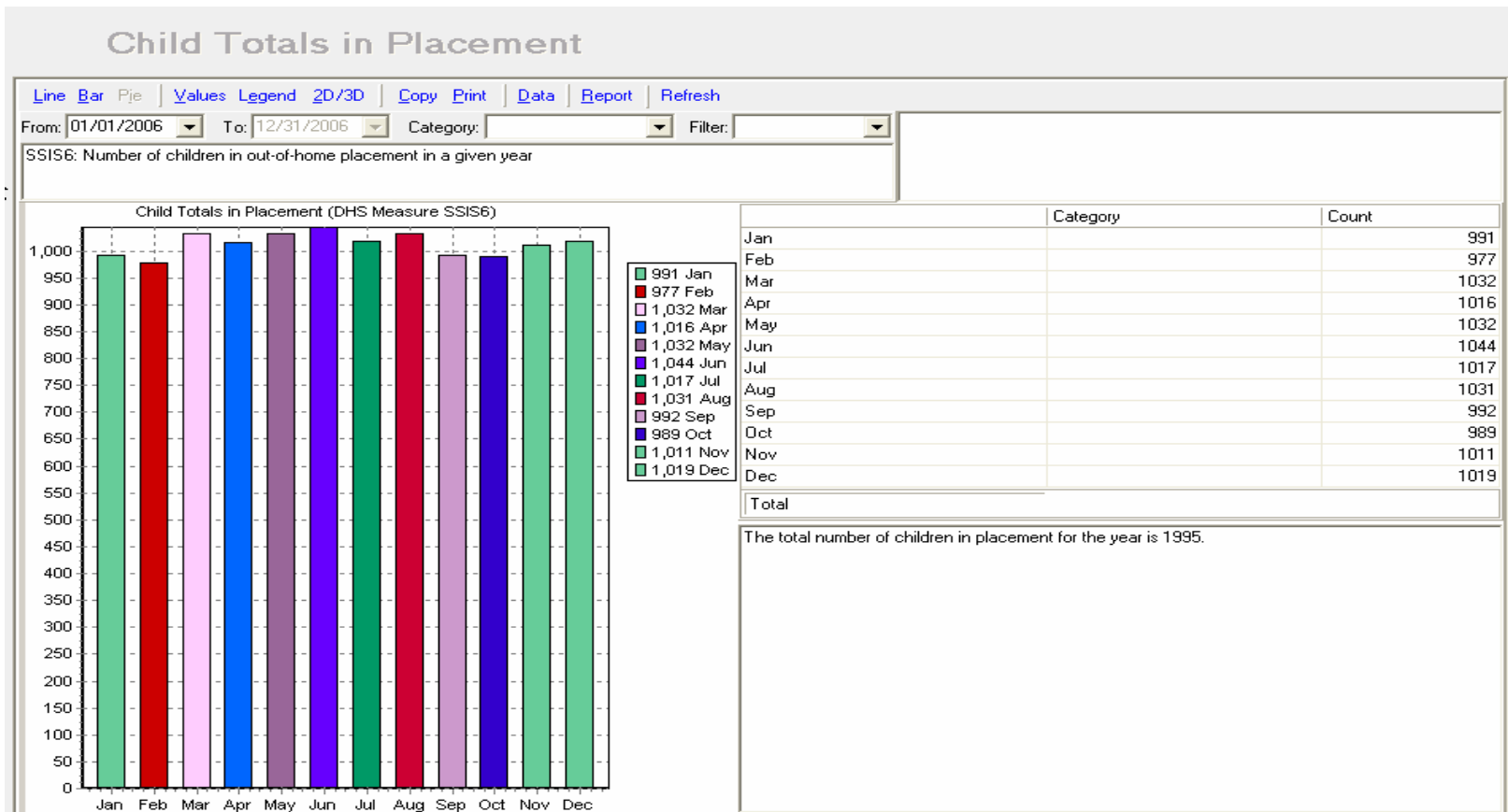
Time to adoption in 2006



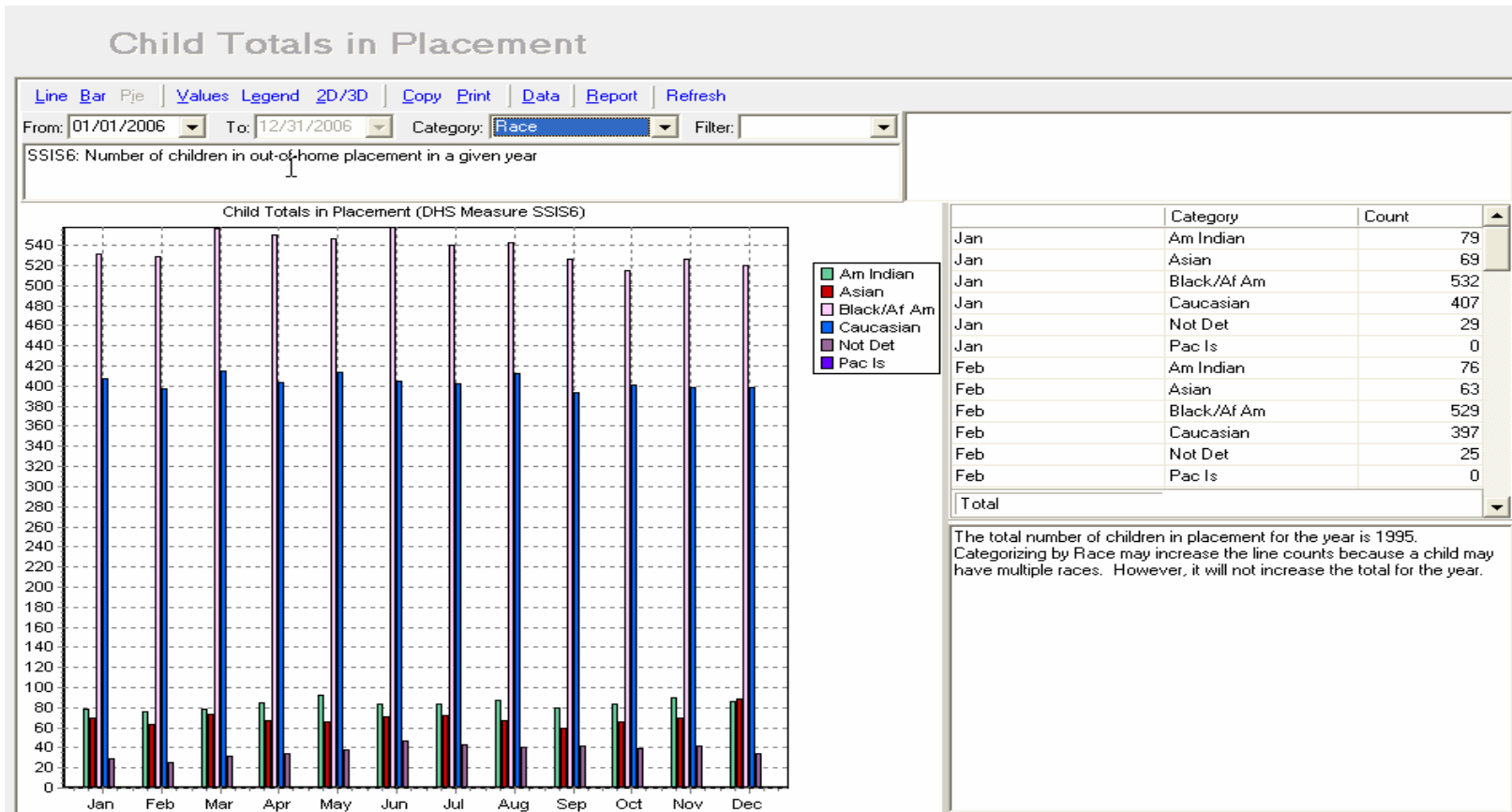
Time to adoption in 2006 by race



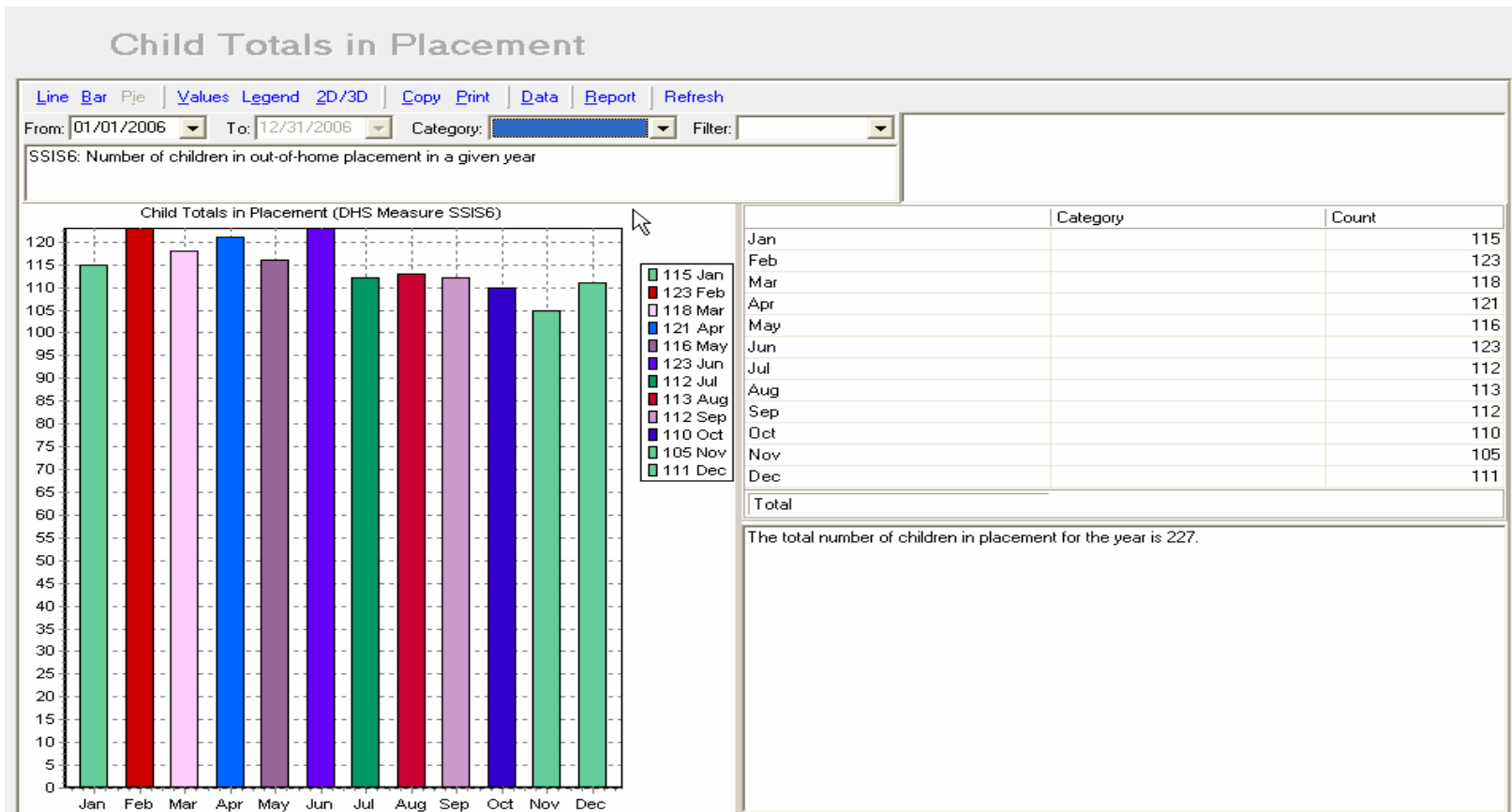
2006 Total number of children in placement



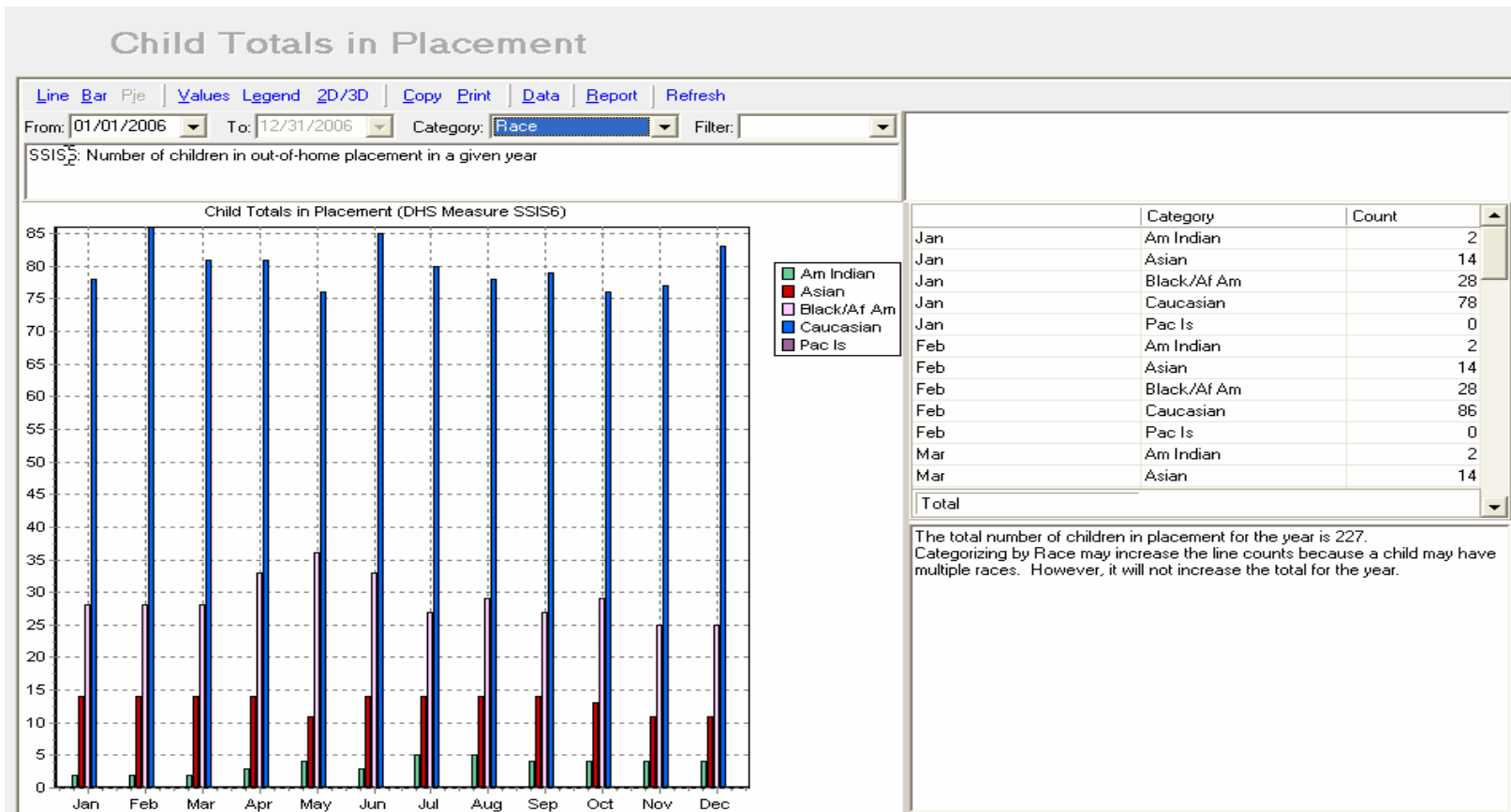
Placement totals by race



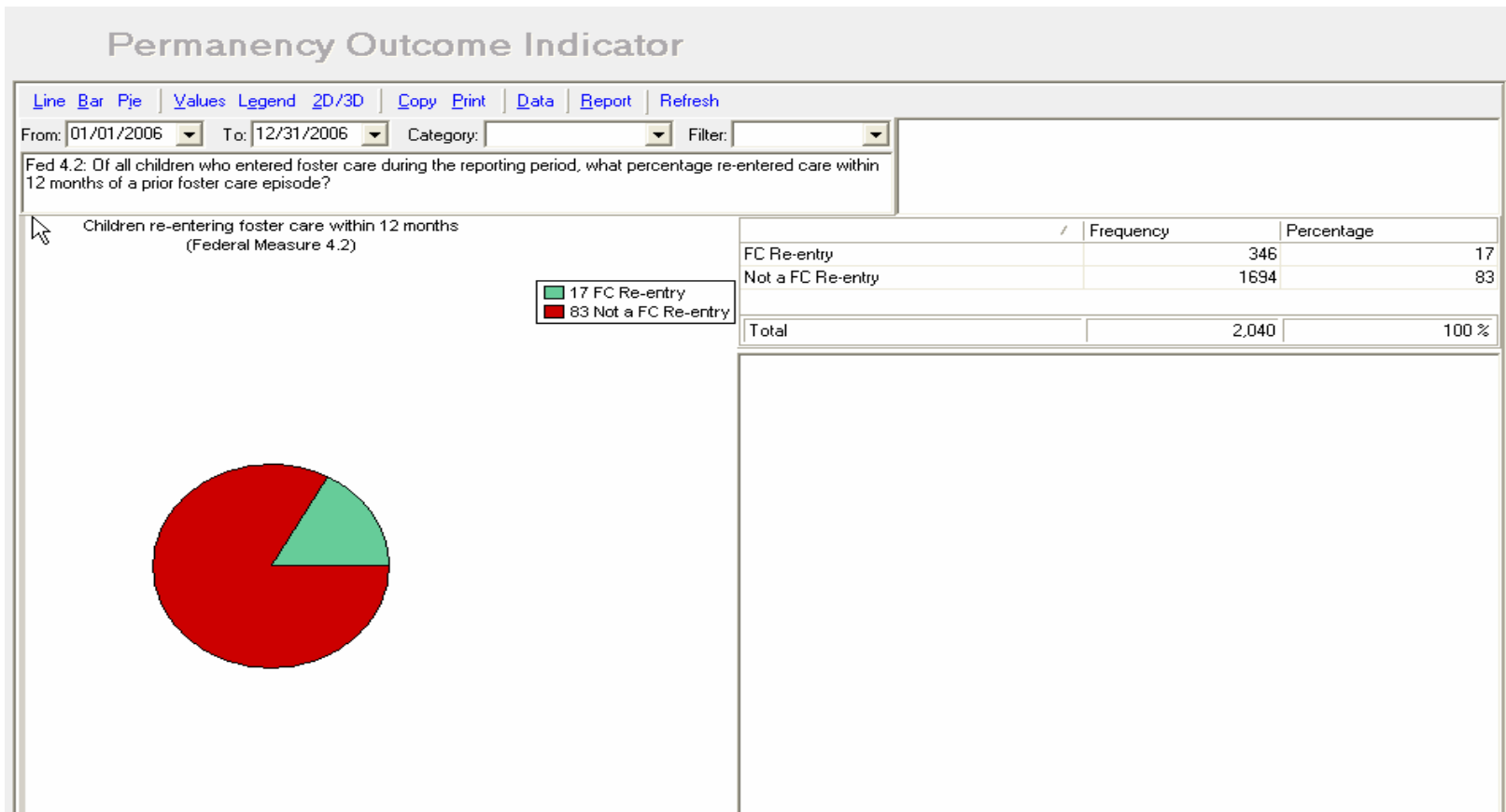
Placement totals in a county with fewer placements



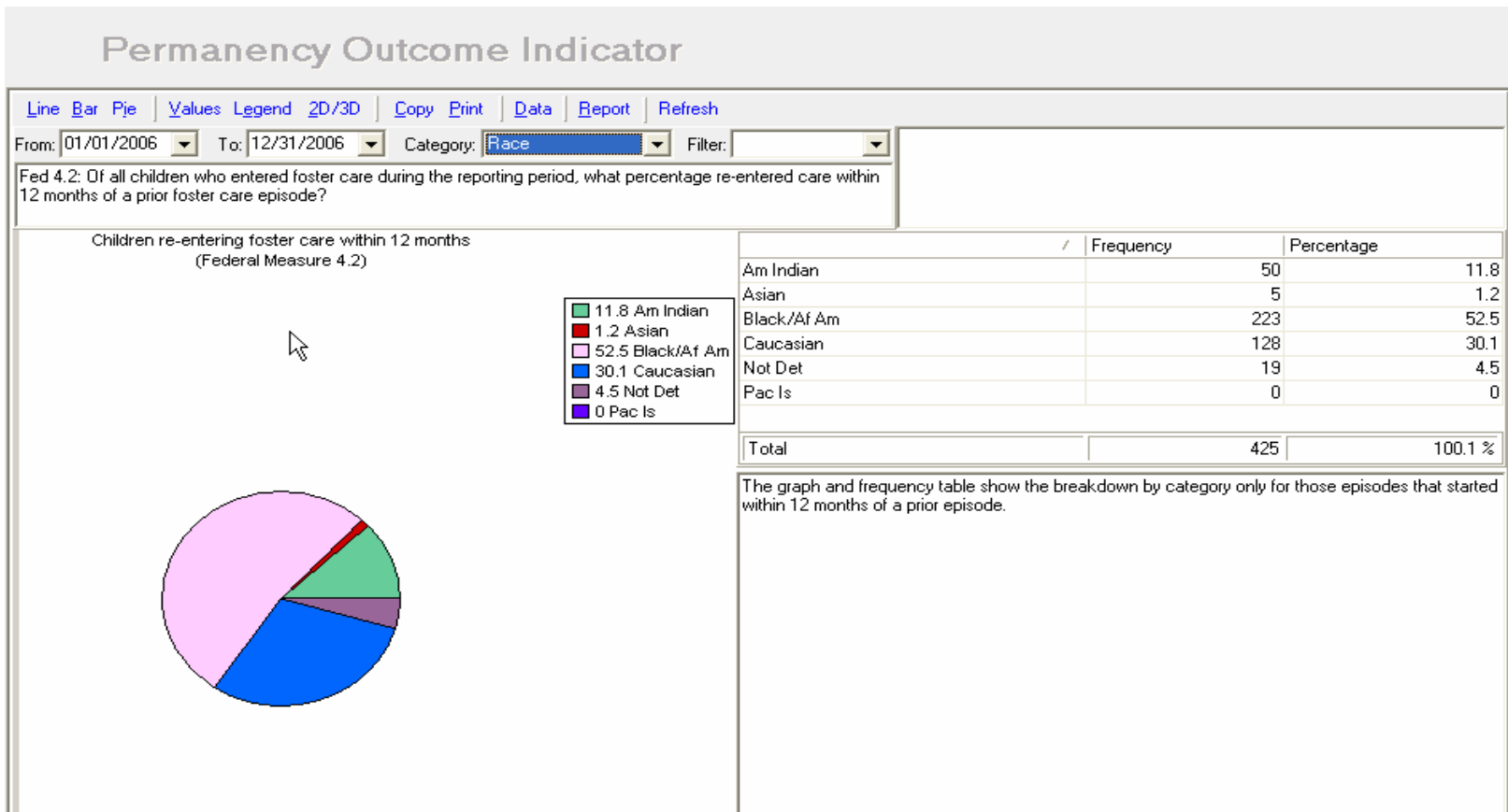
Placement totals by race



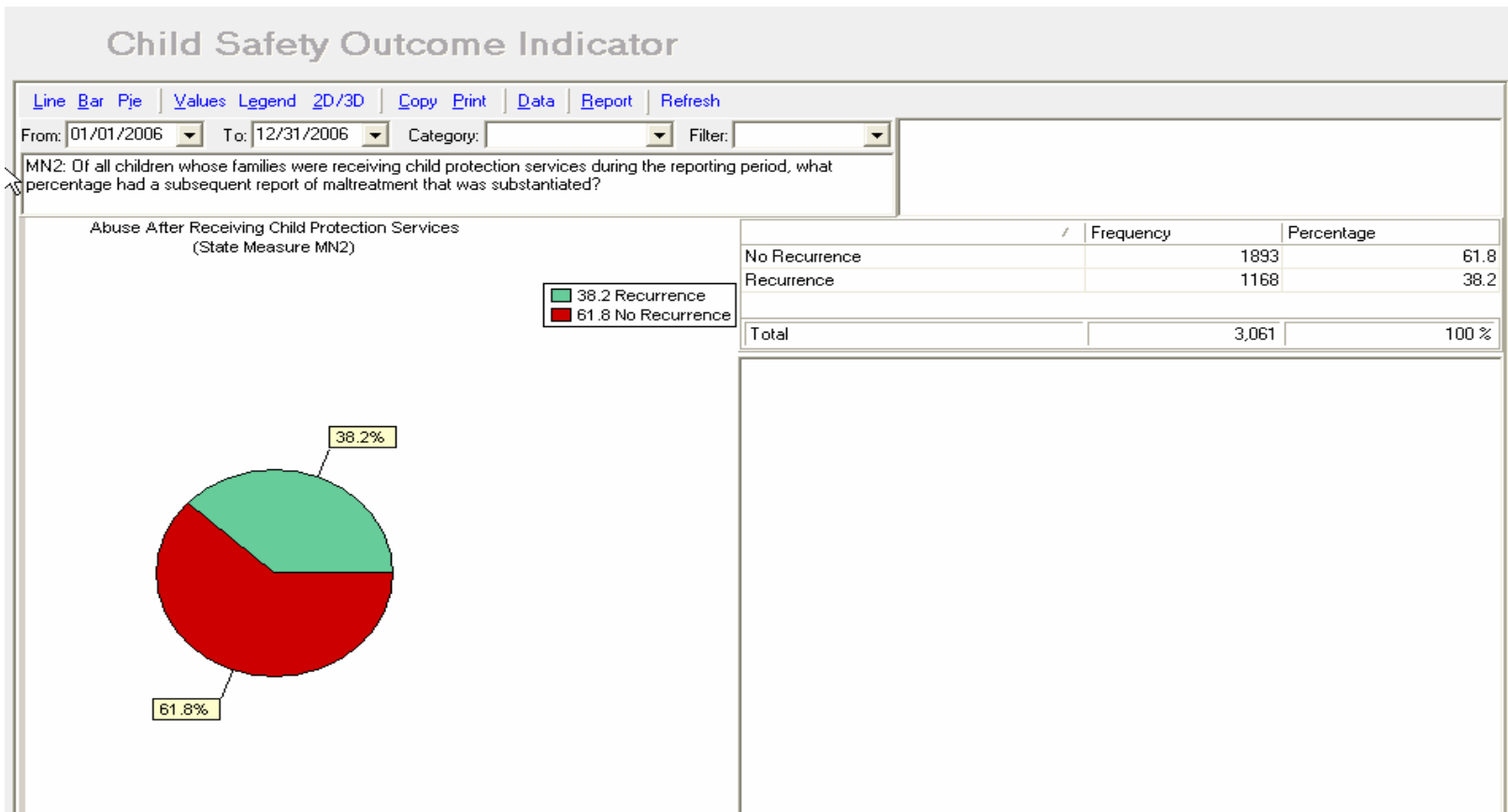
[Re-entry for 2006]



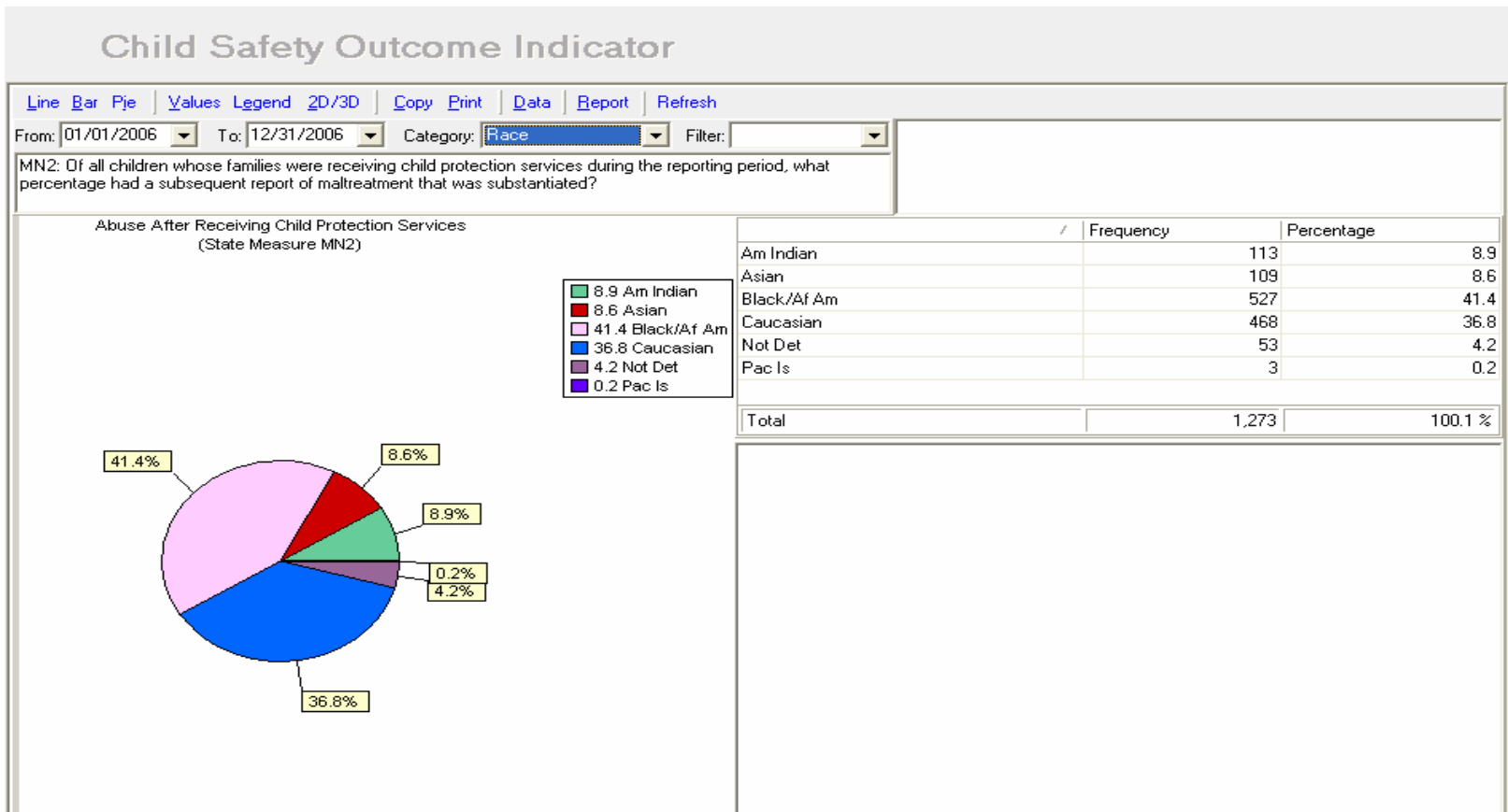
Re-entry filtered by race



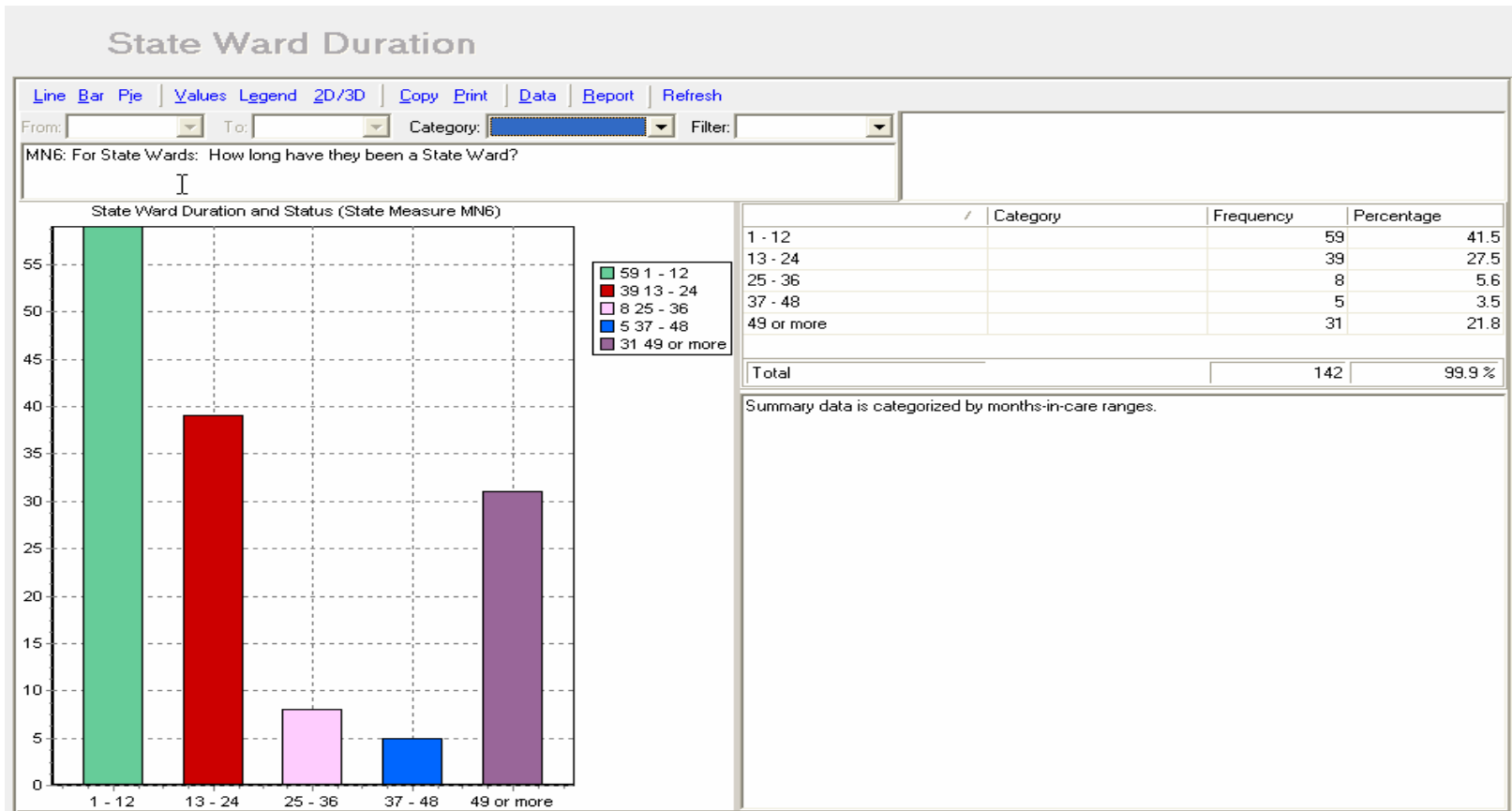
Maltreatment reports post services



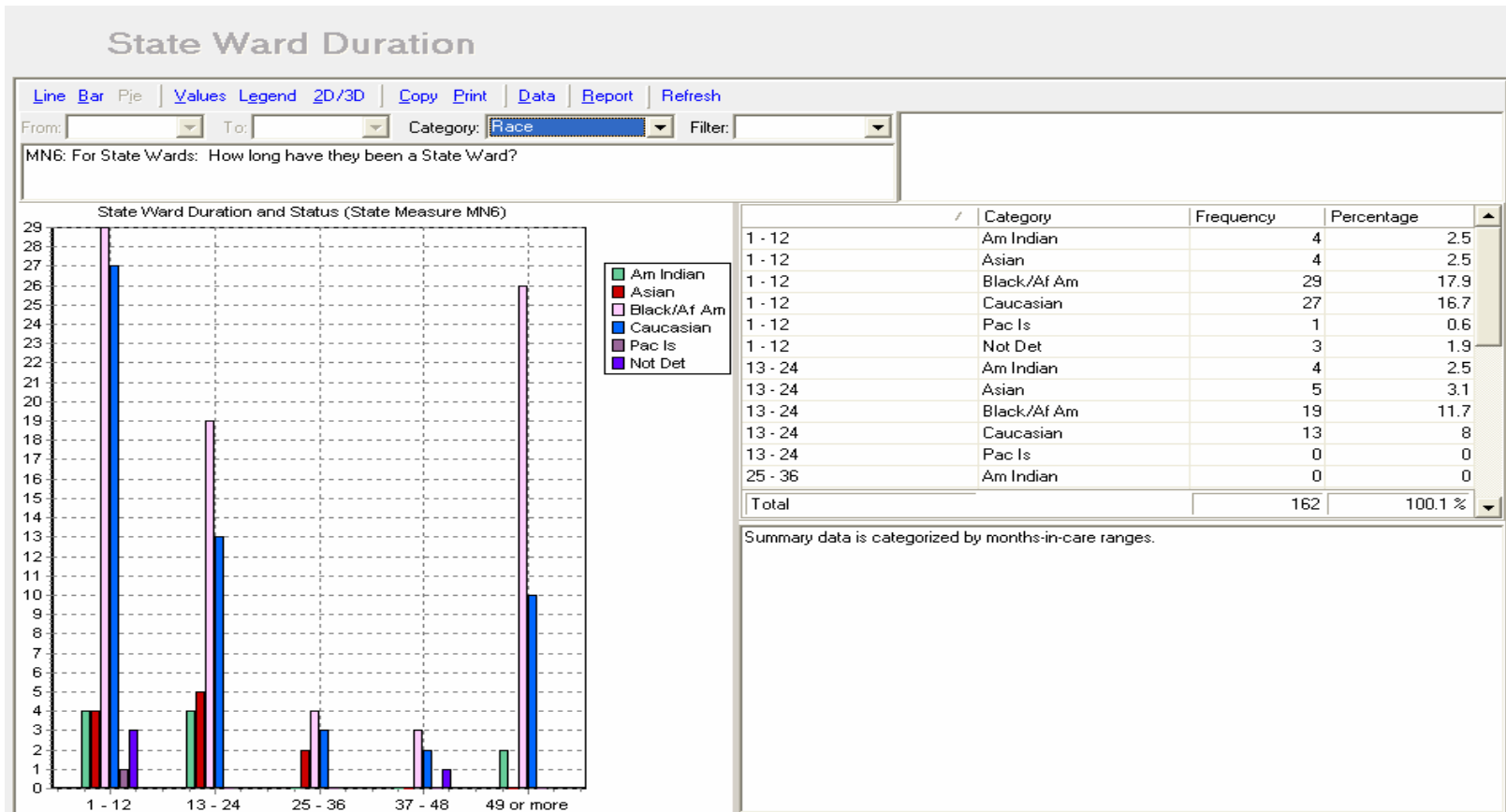
Maltreatment reports post services by race



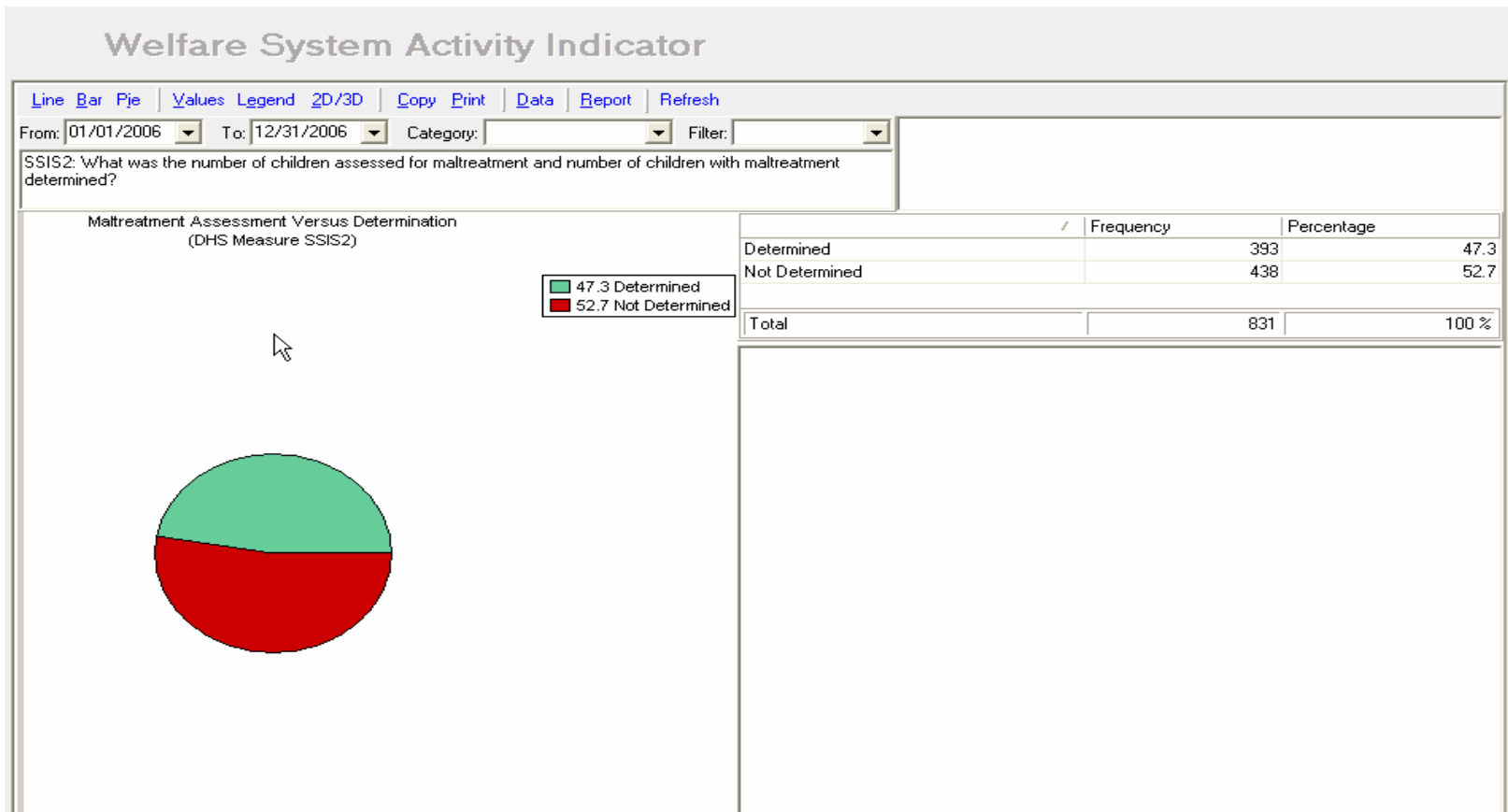
Count and duration of state wards



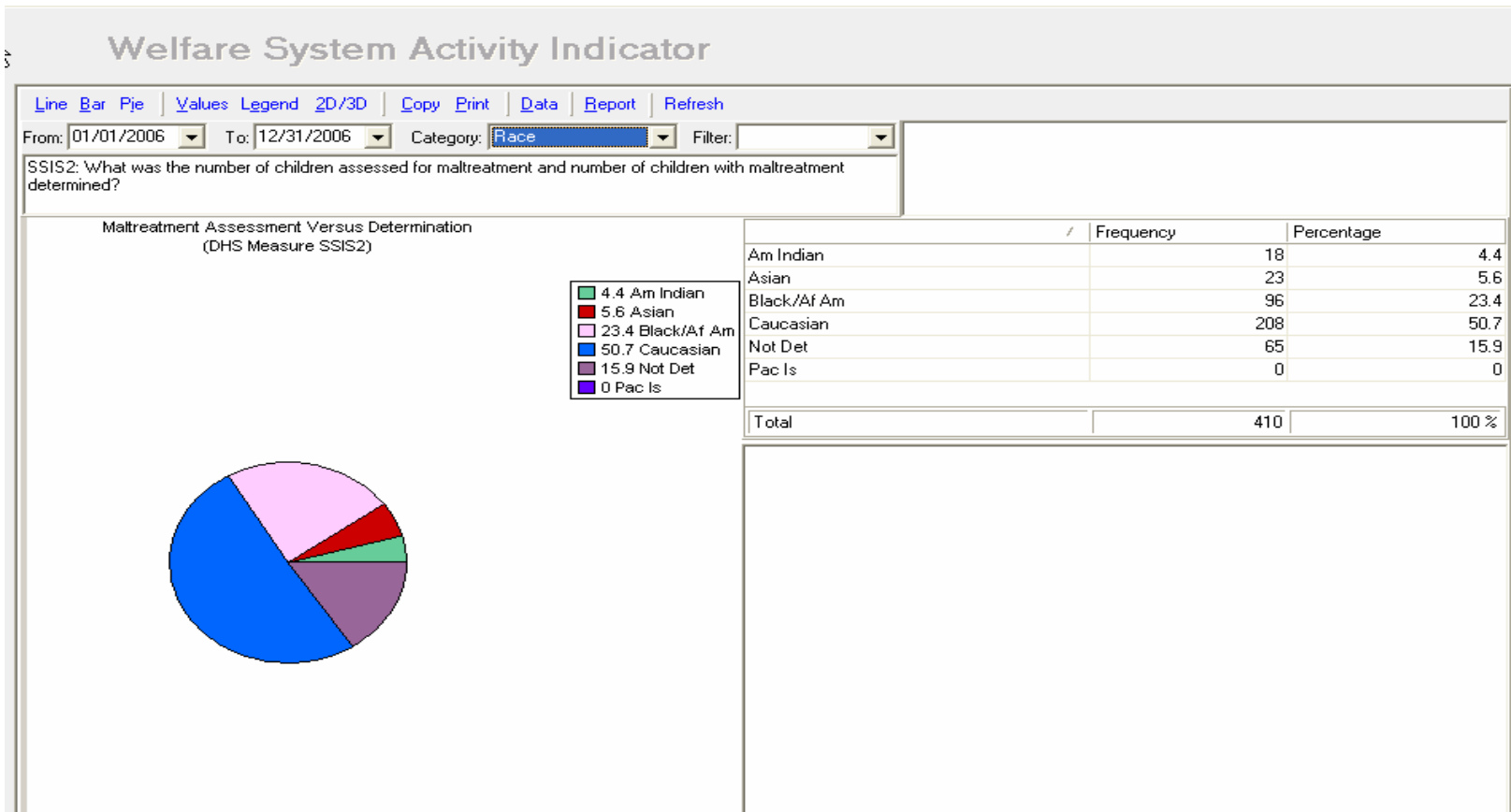
State wards by race



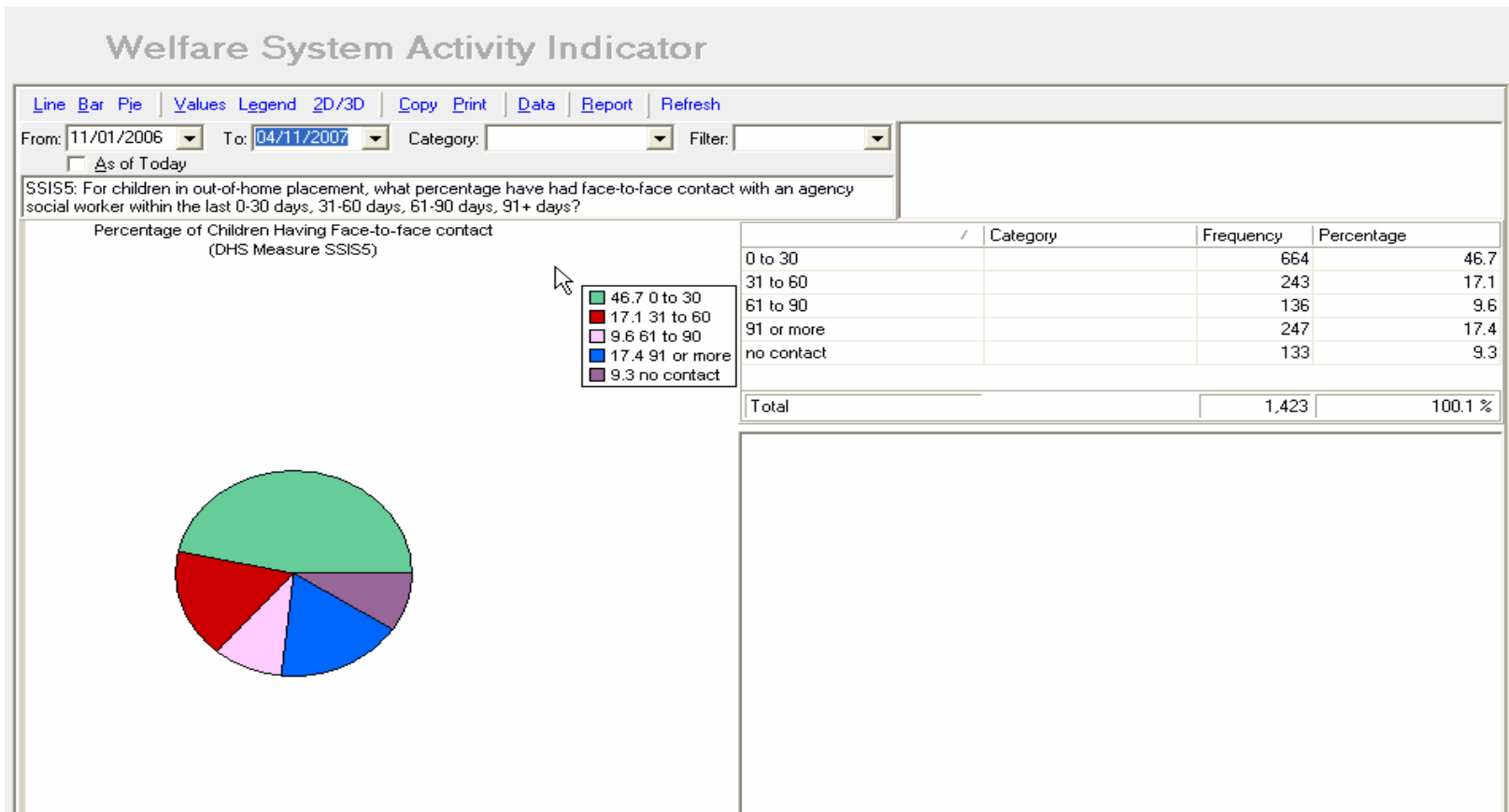
Percentage of determinations



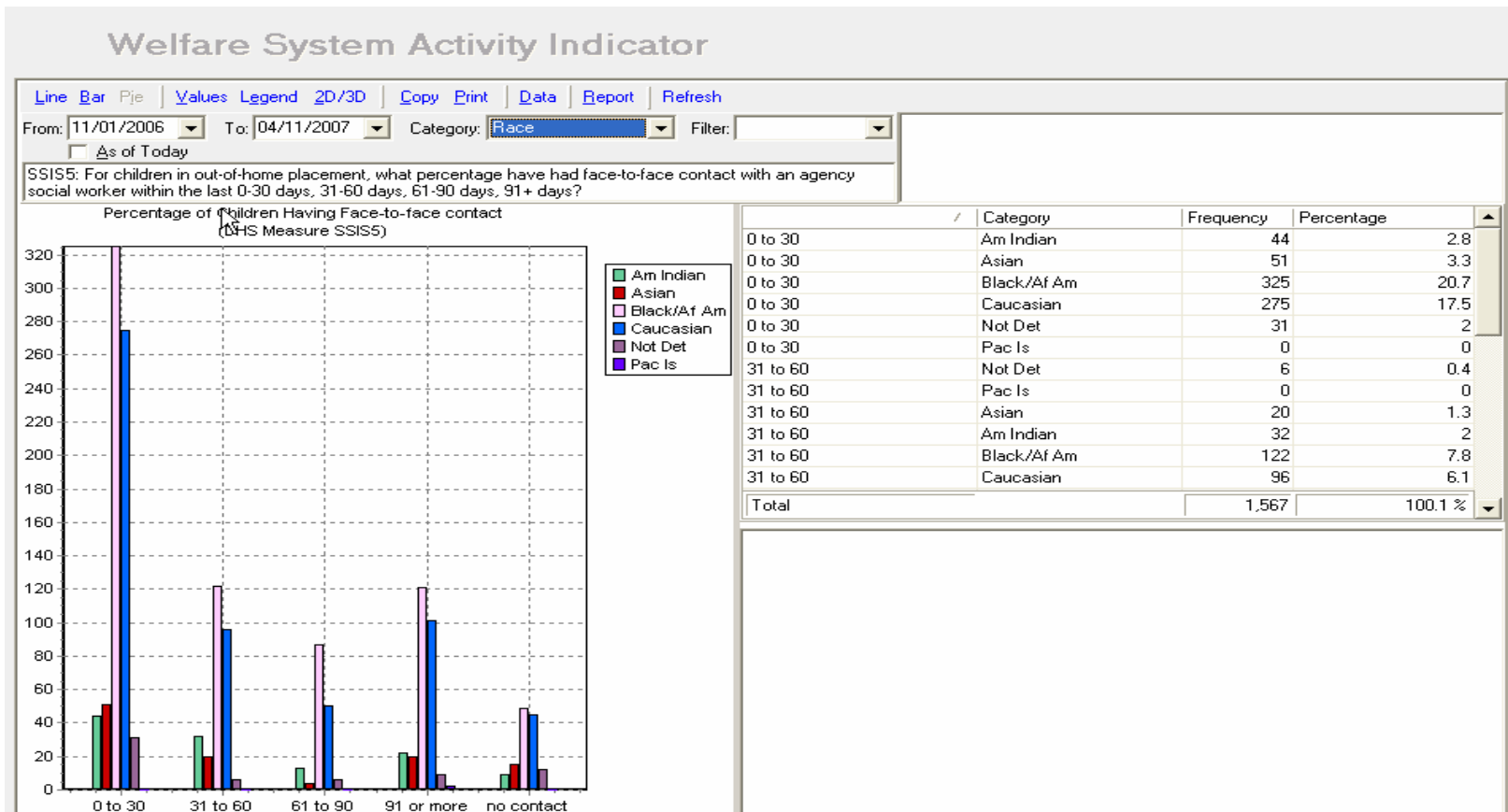
Maltreatment determinations by race



Contact rates with children in placement



Contact rates by race



Improving Disproportionality

- Culturally proficient practice, programs and policy
- African American and American Indian Disparities Committees
- American Indian Child Welfare Demonstration Projects
- Performance Measures
- Minnesota Permanency Demonstration Project
- Family Assessment Response
- Parent Support Outreach Project
- MFIP Family Connections Pilot Projects
- Family Group Decision Making

[Questions and Comments]

- Please share your ideas.....