



Minnesota Department of **Human Services**

Foster Care Re-entry

May 24, 2007

CJI/Child Protection Conference

Connections Matter

Anne Broskoff

*Program Consultant
Child Safety and Permanency Division
Quality Assurance
Phone number : 651-431-4703*

e-mail: anne.broskoff@state.mn.us

Deborah Beske Brown

*Child Foster Care Program Consultant
Child Safety and Permanency Division
Family Support and Placement Services
Phone number : 651-431-4731*

e-mail: deborah.beske.brown@state.mn.us





What is Re-Entry

A child enters foster care within 12 months of a previous discharge from an out-of-home placement

Child and Family Service Reviews (CFSR)

■ Federal CFSR in Minnesota 2001

– Outcome based review

- Permanency Outcome 1: Children have permanency and stability in their living situations

– Re-entry evaluated by:

- » Case Review Data
- » Aggregate State Data compared to the National Standards



CFSR

■ National Standards

- 6 Standards
- Based on 75 percentile of all states performance
- Re-entry National Standard = 8.6% or less

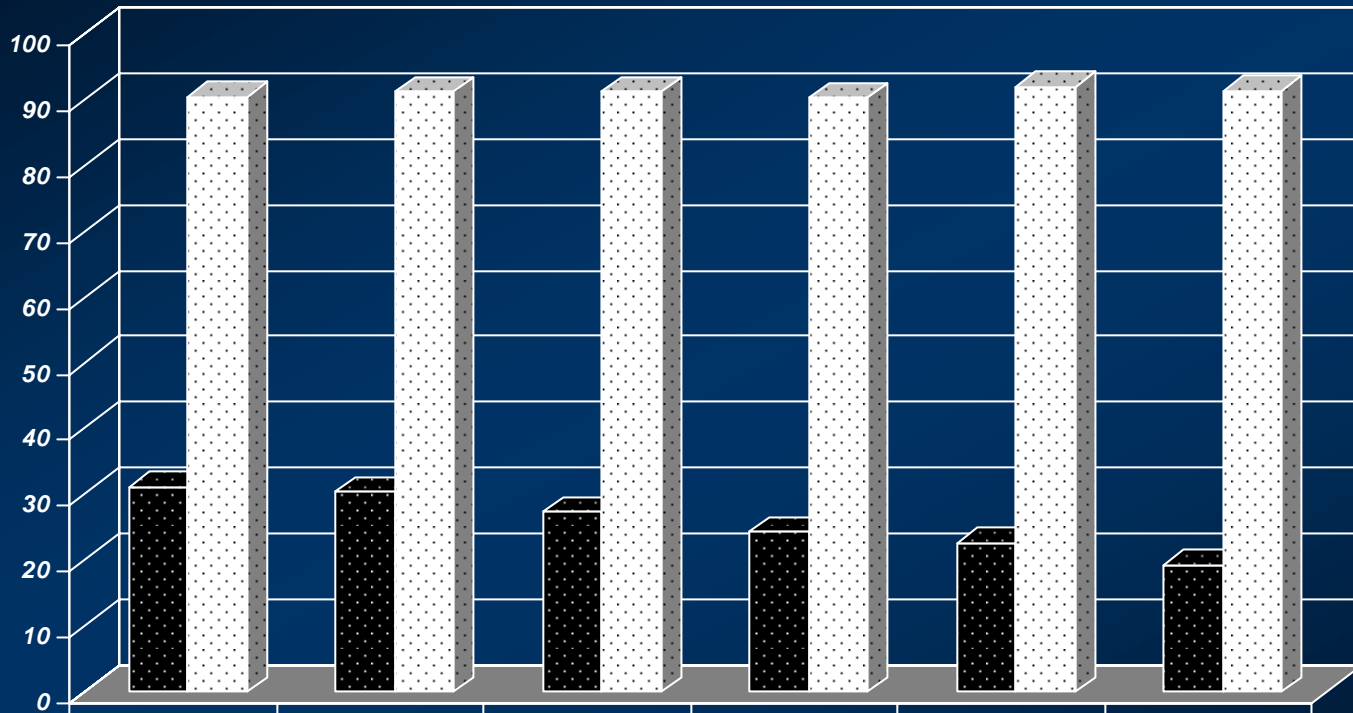


MN National Standards Performance

| Measures | National Standard | 2000 | 2001 | 2002 | 2003 | 2004 | 2005 |
|------------------------------|-------------------|-------|-------|-------|-------|-------|-------|
| Repeat Maltreatment | 6.1%↓ | 5.2% | 6.3% | 5.9% | 5% | 5.1% | 5.3% |
| Abuse/Neglect in Foster Care | .57%↓ | .2% | .41% | .28% | .37% | .4% | .57% |
| Foster Care Re-Entry | 8.6%↓ | 31.1% | 30.4% | 27.3% | 24.3% | 22.7% | 19.3% |
| Placement Stability | 86.7%↑ | 85.6% | 86.1% | 87.9% | 86% | 91.6% | 89.8% |
| Timely Reunification | 76.2%↑ | 90.5% | 91.2% | 91.2% | 90.3% | 91.9% | 91.4% |
| Timely Adoption | 32%↑ | 30% | 36% | 38.7% | 45.9% | 40.4% | 47% |



MN Re-Entry & Reunification National Standard Performance



| | | | | | | |
|-----------------|------|------|------|------|------|------|
| ■ Re-entry | 31.1 | 30.4 | 27.3 | 24.3 | 22.7 | 19.3 |
| ▣ Reunification | 90.5 | 91.2 | 91.2 | 90.3 | 91.9 | 91.4 |



CFSR 1st Round

Re-entry Performance

- Performance at the time of Federal CFSR
- 2001-2005
- 1/2 states met re-entry national standard
- MN was #50/52



CFSR 1st Round

Re-entry Performance

| Range of Foster Care Re-entry Exceeding the National Standard (8.6%) | States |
|--|--------------------------------|
| 8.7% to 12% | IL, HI, TN, AR, AZ, CA, KY, ID |
| 12.1% to 16% | NH, OH, IN, SD, WA, UT, OK |
| 16.1% to 20% | ND, RI, CO |
| 20.1% to 24% | PA, MT, OR, DC, MA, MN |
| 24.1% to 25.5% | IA, WI |



Efforts to Reduce Re-Entry

■ 2003

- Foster Care Re-Entry Introduced as part of the CCSA Plan
- County performance provided

■ 2004

- Individual County Re-Entry Plans
 - Define placements
 - Clean up data entry practices
 - Case analysis of re-entry circumstances
 - Strategies developed



Efforts to Reduce Re-Entry

■ 2006/2007

– CCSA Plans

- Counties set goal and develop strategies to reduce foster care re-entries.

■ 2003 to Today

– Minnesota County Child and Family Service Reviews

- National Standard performance
- Case Reviews

– County Program Improvement Plans (PIP)



MN CFSR

Case Review Data

■ Item 5: Foster care re-entries

- Focus: Whether children who entered foster care during the period under review were re-entering within 12 months of a prior discharge
 - Failed Trial home visits do NOT count as a re-entry
 - Agency efforts to prevent re-entry are considered



Case Review Performance

| CFSR- MN 2001 | | Fed.CFSR 01-04 | | MnCFSR 2003 | | MnCFSR 2004 | | MnCFSR 2005 | | MnCFSR 2006 | | MnCFSR 03-06 | |
|------------------|----|-------------------|-----|----------------|----|----------------|----|----------------|----|----------------|----|-----------------|-----|
| % | N | % | N | % | N | % | N | % | N | % | N | % | N |
| 100% | 24 | 85.2% | 311 | 75.93% | 54 | 84.48% | 58 | 68.97% | 58 | 80.43% | 46 | 77.3% | 216 |



What contributes to Re-entry in your county?



Re-entry Research

Most research is focused on factors associated with re-entry (Bronson 2005)

- Parental ambivalence
- Parent's mental health
- Parent's chemical health
- Poverty
- Placement instability
- Family coherence
- Non-relative placement
- # of service goals and tasks for the family
- Children with health/behavior difficulties
- Lack of reunification services and case management





Minnesota Department of **Human Services**

Promising Approaches

Assessment

Case Planning

Planning post-placement

Corrections

Re-entry case review

Assessment

Agency use of short stays

- Profile of the child
- Case Planning conferences – Group family conference
- Safety plans
- Crisis plans with drills



Case Planning

- Relationship between the foster parent and parents
- Social worker visits
- Chemical health treatment
- Visitation
 - Setting/frequency
 - Trial home visits
 - Shared family care



Trial Home Visits

Mn Statute 260C.201

- County maintains custody of the child, parent has physical custody of the child
- County agency can remove the child from the parent's care prior to court authorization
- THV should not exceed 6 months
- Permanency clock continues during THV



Planning post placement services

- Foster parent recommendations
- Assessing needs / case plan
- Formal and informal services
- Crisis plans with drills



Formal and Informal Support Systems

■ Formal

- Respite care
- Child Care
- Transportation
- Mentor
- Training
- In-home counseling
- PCA
- Parenting supports
- Financial programs

■ Informal

- Extended family
- Babysitting
- Transportation
- Laundry
- Meals
- Shopping
- Homework
- Activities
- Family assistance



Corrections



Re-entry Case review

